



Regenerative Ag Forum

Mary-Jane Orr

Ph.D., P.Ag., CCA

General Manager, MBFI

November 20th, 2019





Manitoba Beef & Forage Initiatives Inc. is a centre of agricultural innovation engaging in science-based research to benefit valuable ecosystems, improve producer profitability, and build social awareness around the beef and forage industry.

Building on the pillars of:

- Partnership
- Research & Demonstration
- Communication



Manitoba
forage
& **grassland**
Association



Ducks Unlimited Canada







Research – Demonstration - Extension



Academic

Applied Demo

Extension

On farm trial

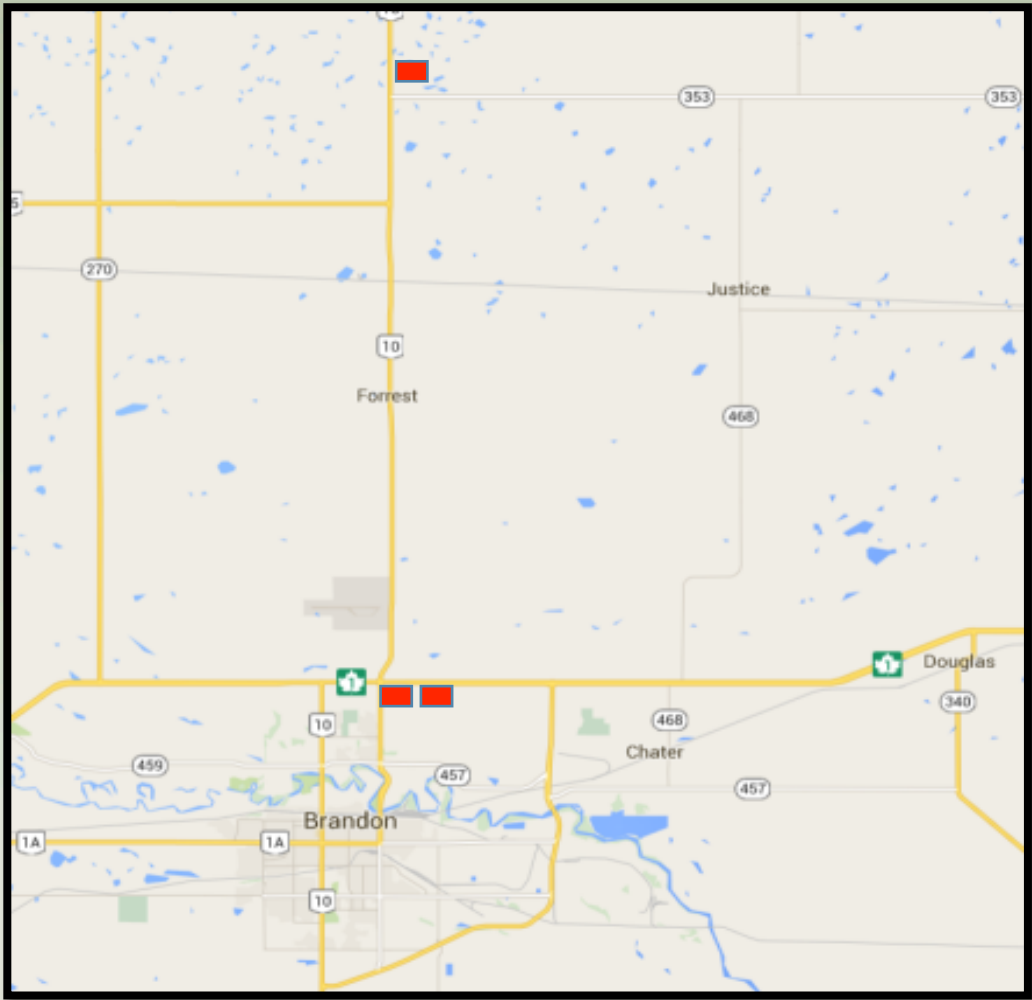
Farm Operation



Research & Demonstration Topic Areas



- Forage & Grassland Productivity
 - 5 Academic studies, 6 Applied Demonstration projects, 3 On farm trials
- Nutrition & Feed Efficiency
 - 1 Academic study and 2 On farm trials
- Environmental Sustainability
 - 2 Academic studies, 3 Applied Demonstration projects, 2 On farm trials





- Brookdale Farm
 - 10 min North of Brandon; Off HWY 10 on HWY 353
 - 640 acres previously Zero Till Farm

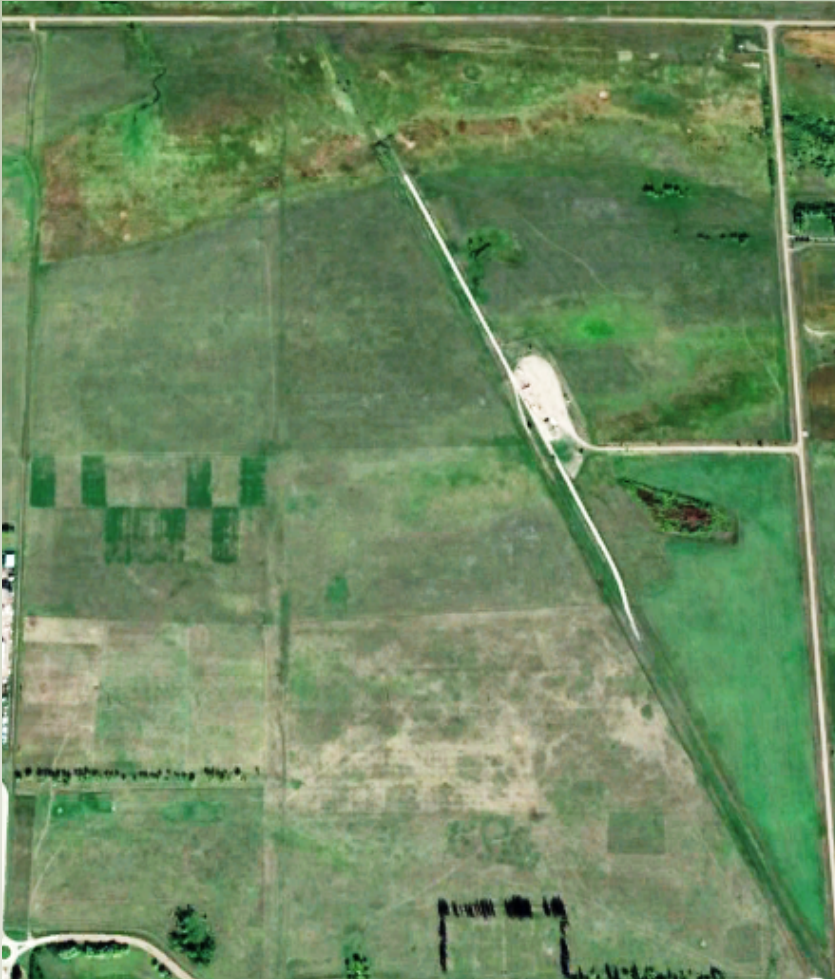


- Johnson Farm - Brandon North Hill East of First Street
 - 480 acres previously AAFC Beef Research Farm



First Street Pasture

- Brandon North Hill East of First Street
- 426 acres of marginal pasture



On Farm Trial – Corn Intercropping

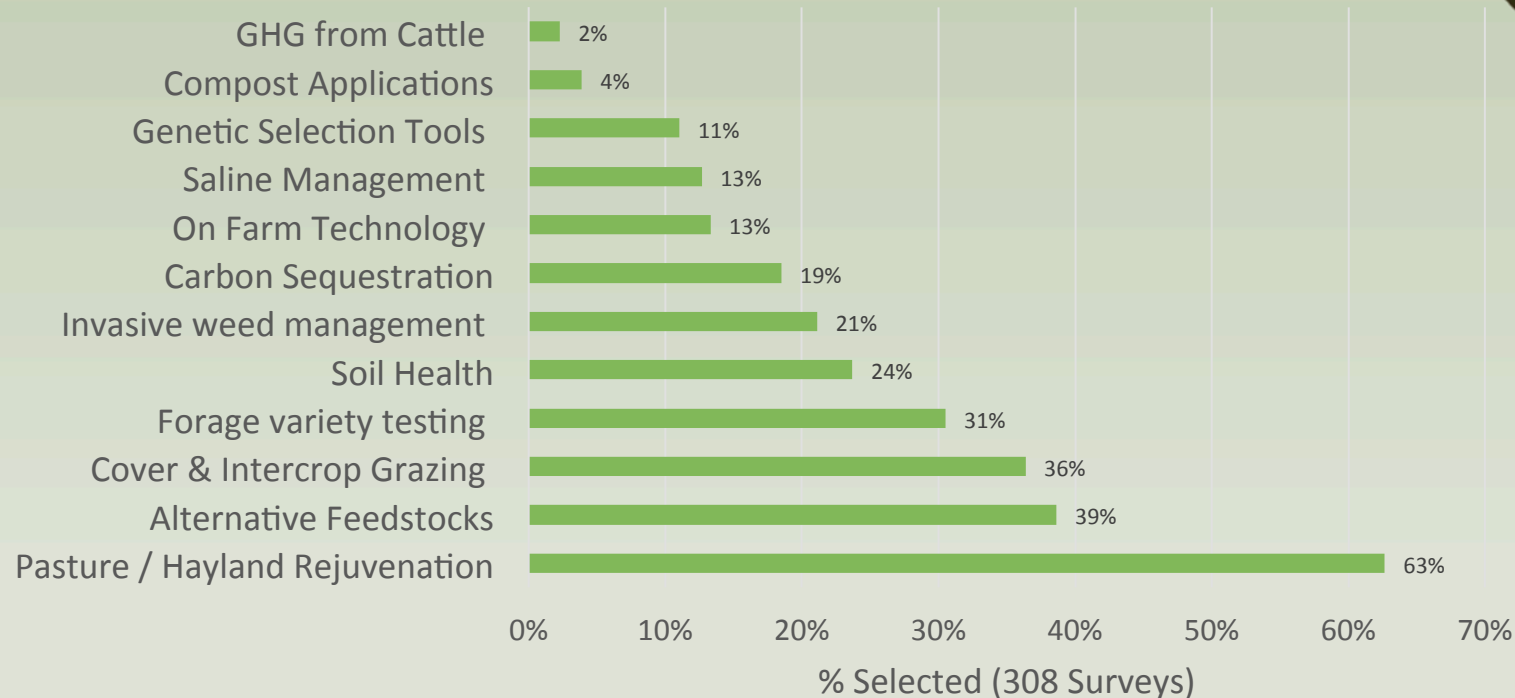


On Farm Trial – Corn Intercropping





Manitoba Beef Producer Survey



Sharing our Story



Brookdale Farm Learning Centre



Building awareness



Connecting with Field Naturalists Groups

Academic

Learning Centre interpretive garden and trail

School Field Trips

On farm trial

Extension

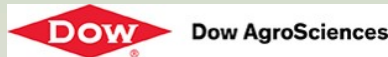
Applied Demo

Remote Learning

Community youth groups

Farm Operation

Highschool Student Career Days



Connect with MBFI



 @MBBeefandForage

 @MBBeefandForage

 @MBBeefandForage

www.mbfi.ca

431-255-0011 Cell

204-761-3300